

Northern  
Challenge  
Series

2025

---

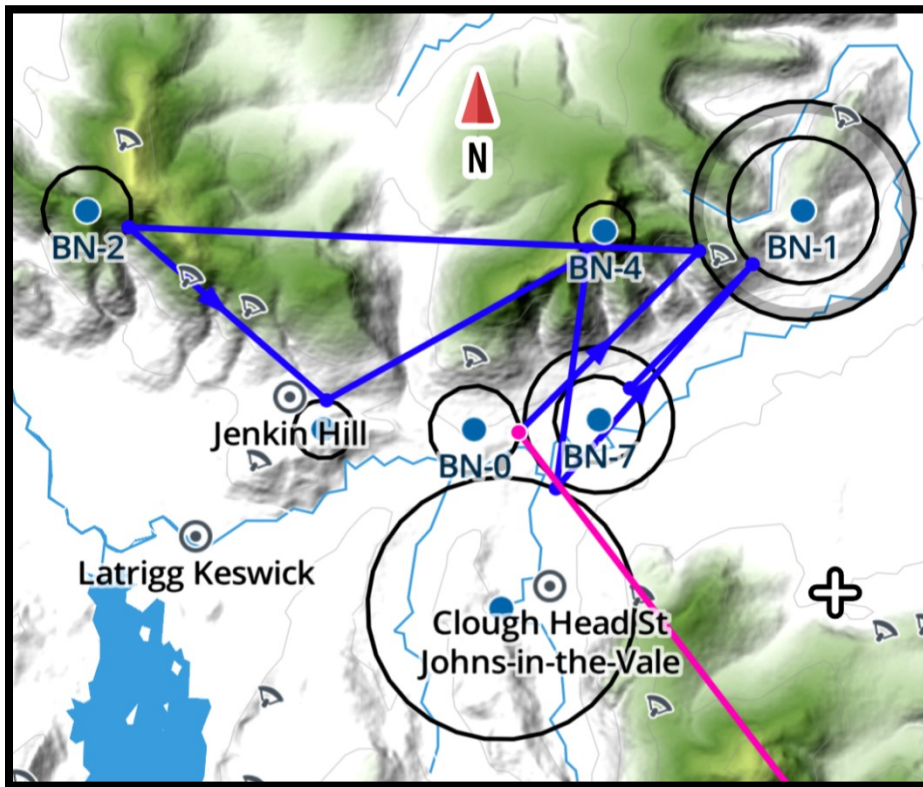
Main Series tasks - illustrated

## Northern Challenge Series (MAIN)

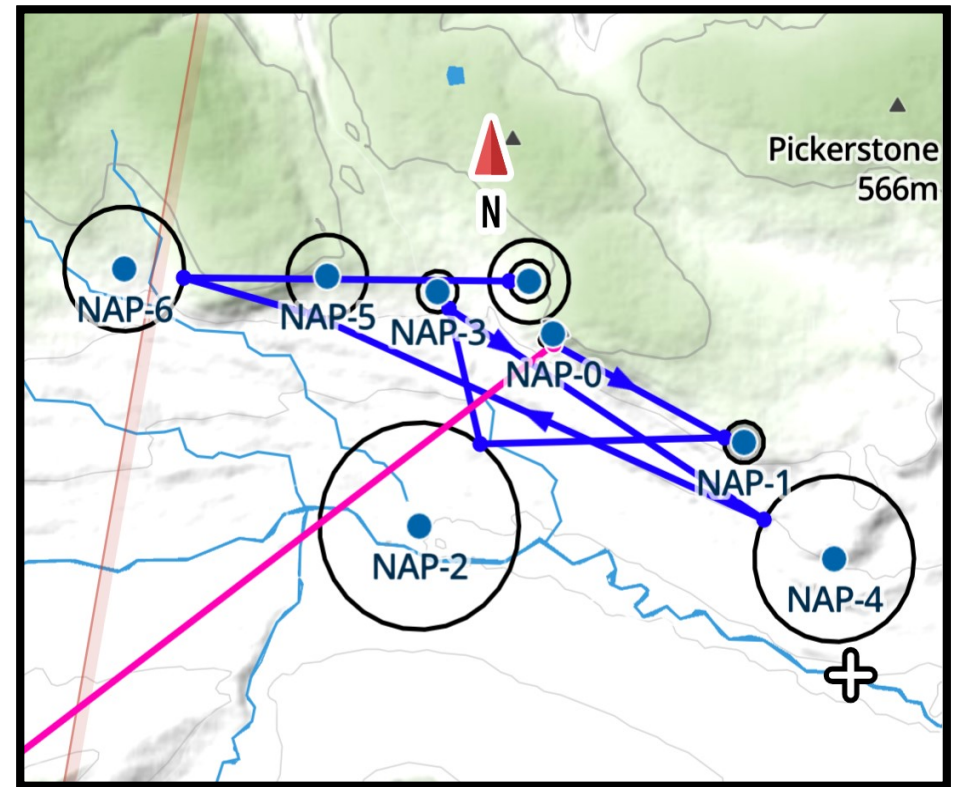
CHANGES for 2025 and Task Diagrams

NCS 2025	Task link/id number	Notes	Score	Date
Blease	<a href="https://www.xcmap.net/x.php?t=695">https://www.xcmap.net/x.php?t=695</a>			
Nappa	<a href="https://www.xcmap.net/x.php?t=1188">https://www.xcmap.net/x.php?t=1188</a>	New task/site in 2024		
Coniston	<a href="https://www.xcmap.net/x.php?t=686">https://www.xcmap.net/x.php?t=686</a>			
Far Whitestones	<a href="https://www.xcmap.net/x.php?t=706">https://www.xcmap.net/x.php?t=706</a>			
Windbank	<a href="https://www.xcmap.net/x.php?t=1214">https://www.xcmap.net/x.php?t=1214</a>	New task in 2024		
Pendle	<a href="https://www.xcmap.net/x.php?t=1210">https://www.xcmap.net/x.php?t=1210</a>	New task in 2024		
Parlick	<a href="https://www.xcmap.net/x.php?t=1183">https://www.xcmap.net/x.php?t=1183</a>	New task in 2024		
Model Ridge (M)	<a href="https://www.xcmap.net/x.php?t=1198">https://www.xcmap.net/x.php?t=1198</a>	New task in 2024		
Stags (M)	<a href="https://www.xcmap.net/x.php?t=1195">https://www.xcmap.net/x.php?t=1195</a>	New task in 2024		
Whernside	<a href="https://www.xcmap.net/x.php?t=992">https://www.xcmap.net/x.php?t=992</a>			
Brigsteer	<a href="https://www.xcmap.net/x.php?t=1170">https://www.xcmap.net/x.php?t=1170</a>	New task/site in 2024		
Dodd	<a href="https://www.xcmap.net/x.php?t=1239">https://www.xcmap.net/x.php?t=1239</a>			
Wild Boar	<a href="https://www.xcmap.net/x.php?t=1207">https://www.xcmap.net/x.php?t=1207</a>	New task/site in 2024		
Longridge	<a href="https://www.xcmap.net/x.php?t=1215">https://www.xcmap.net/x.php?t=1215</a>	New task/site in 2024		

**Notes:** All the 2024 challenges have been retained unchanged.. The 2025 site headers have been tidied up; only site named is now used.  
(M) indicates 'members only'.



ID 868 Blease 40.1k , optimised 28.2k SSE – SSW

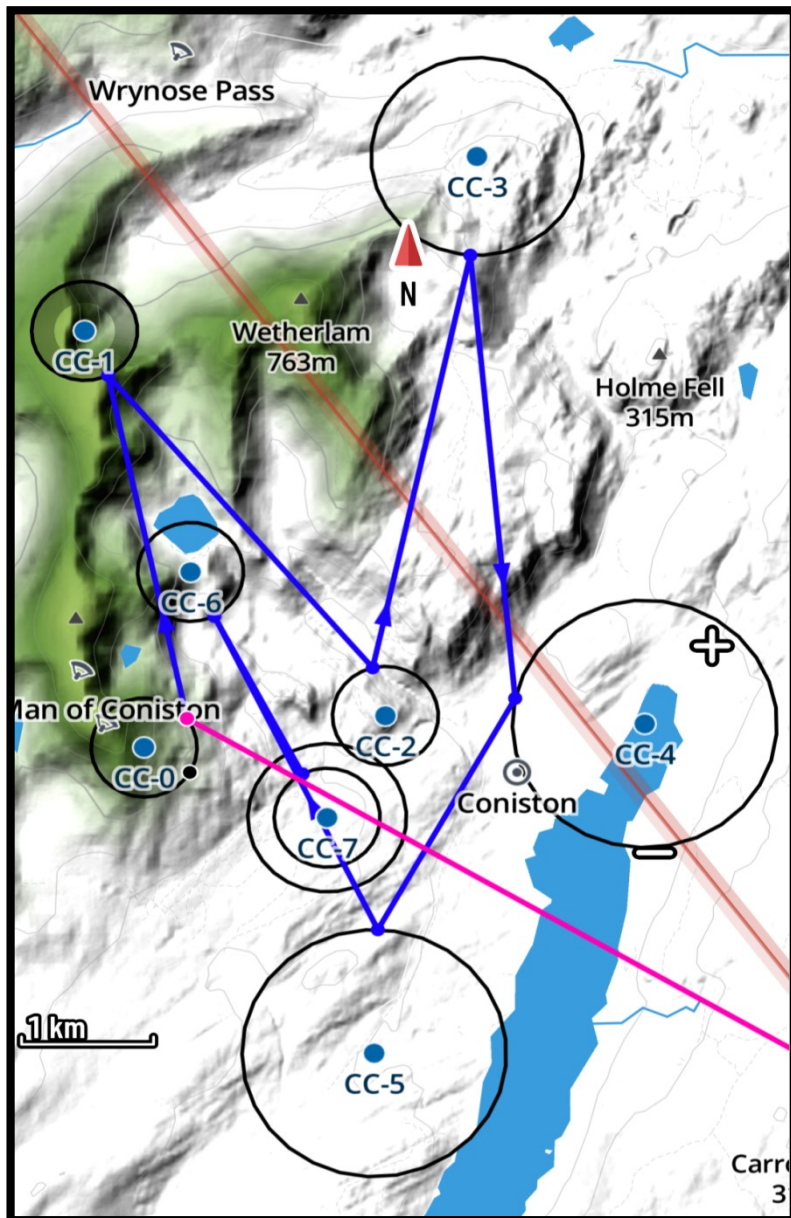


ID 1188 Nappa 24.4k, optimised 19k S – SW

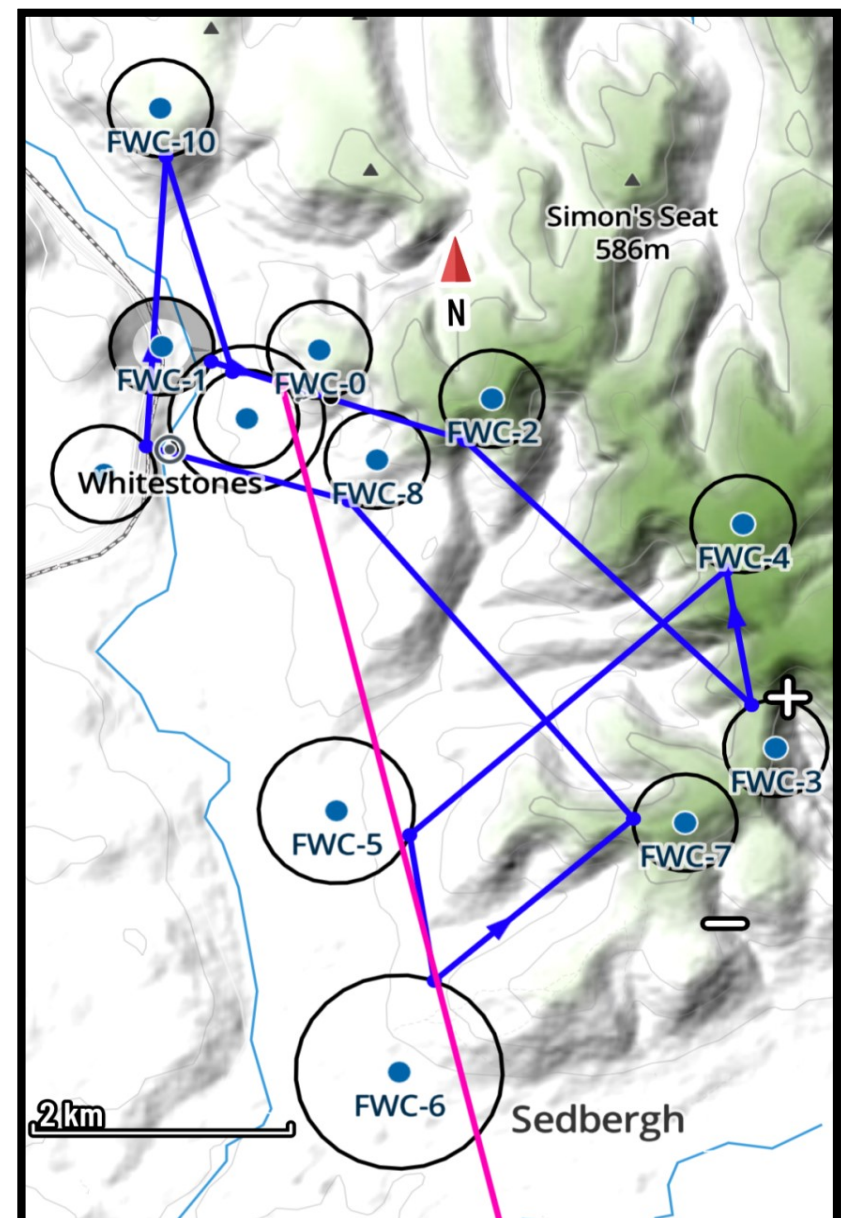
All the task diagrams have been gathered together for illustrative purposes and to provide an overview of the 2025 set.

A fairly major refresh has been done in 2024 - the intention being to make tasks more accessible to lower rated wings. If you're a hot-shot pilot on a two-liner C or D wing then the time points are more the focus (remember the distance /time factor is roughly 60/40 – but you need to reach goal for time points to be calculated in). A number of new sites have come into play to encourage pilots to explore a little; some have also been removed as they didn't see much traffic. There are now no GRID challenges. All removed tasks and GRIDS can still be found – just not in the NCS set. For fuller information relating to the Rules and Aims you should refer to the appropriate PDF download.

\*The site/task links have been blanked out. This is because things are not yet finalised - small tweaks (or even the odd big one) may yet take place. They will go live on xcmapp after 1<sup>st</sup> Jan, ready for a 1<sup>st</sup> Feb start to the season. \* now done.

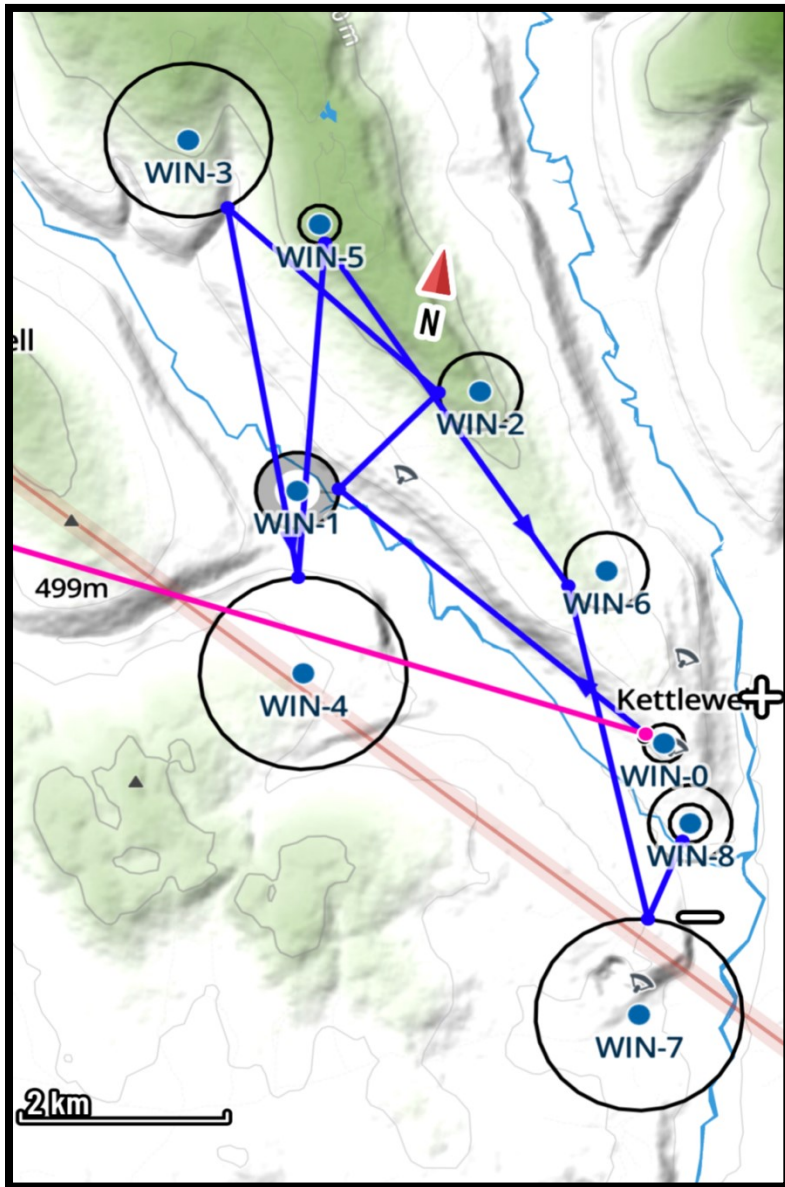


ID 686 Coniston 26/3k , optimised 19.1k ENE – SE

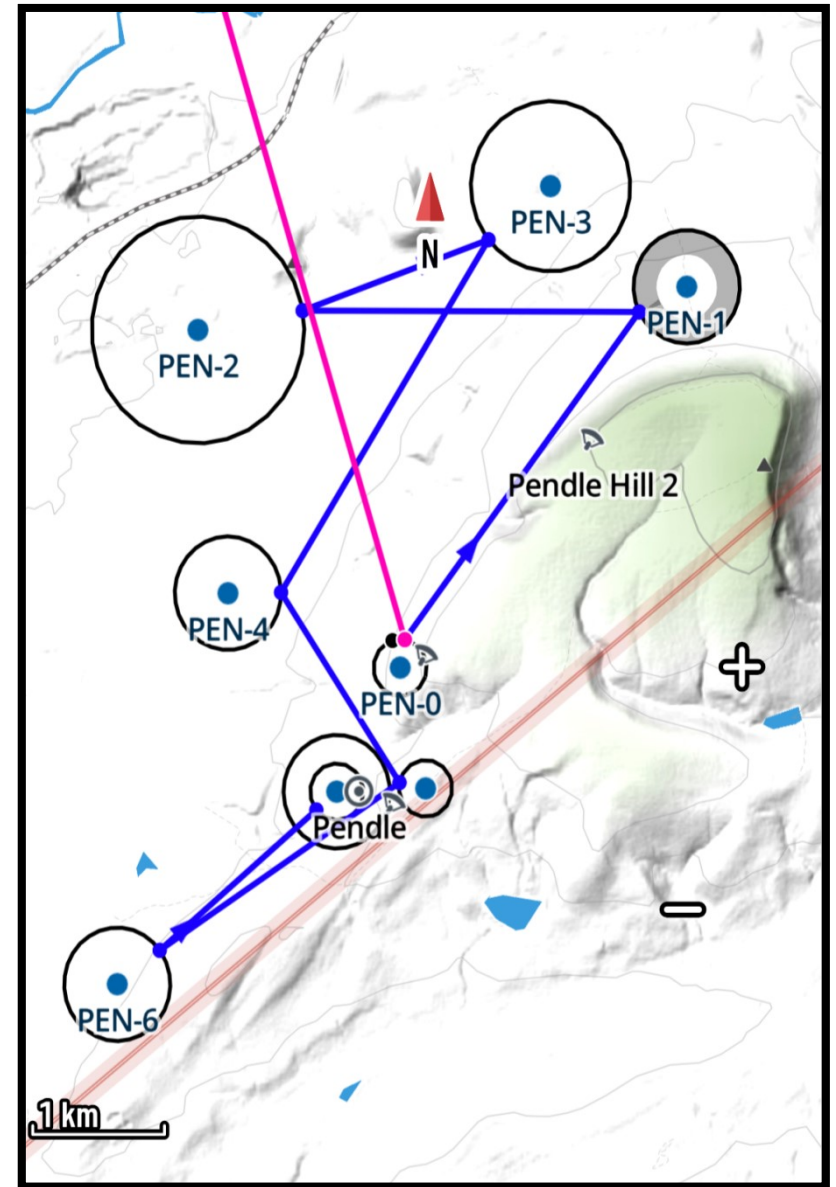


ID 706 Far Whistons 30.1k, optimised 22.6k SW - W

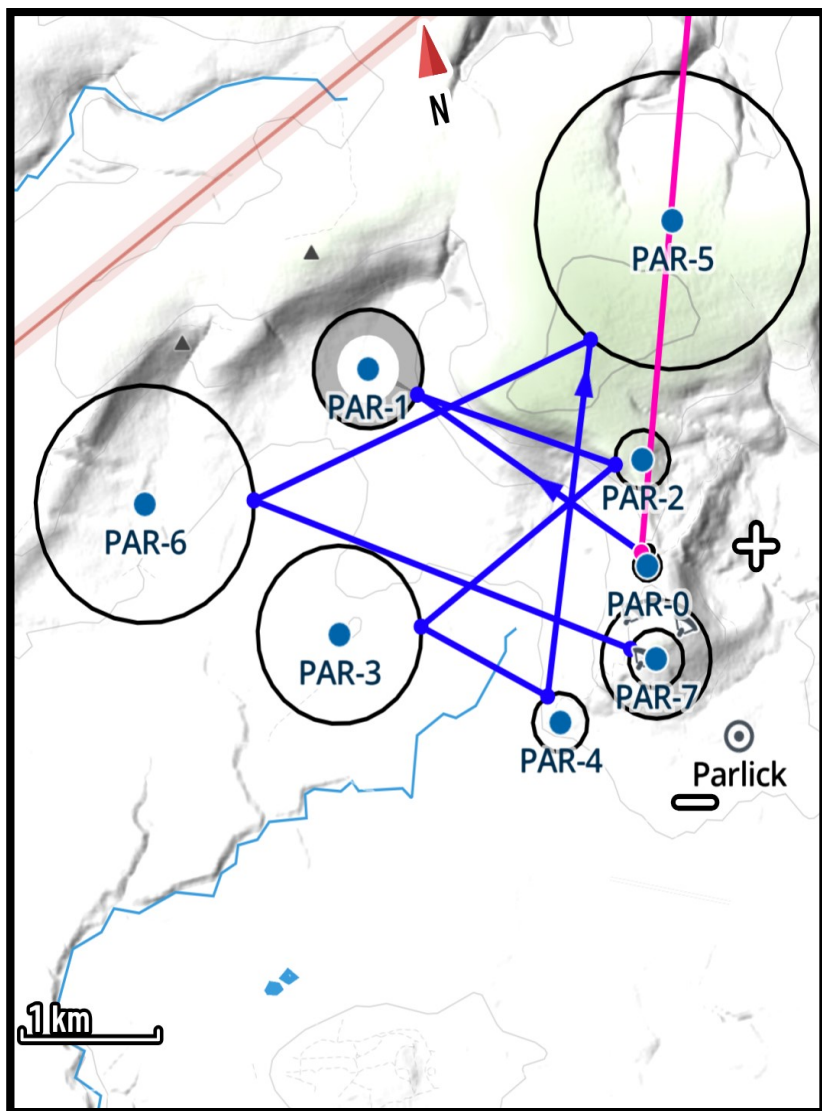




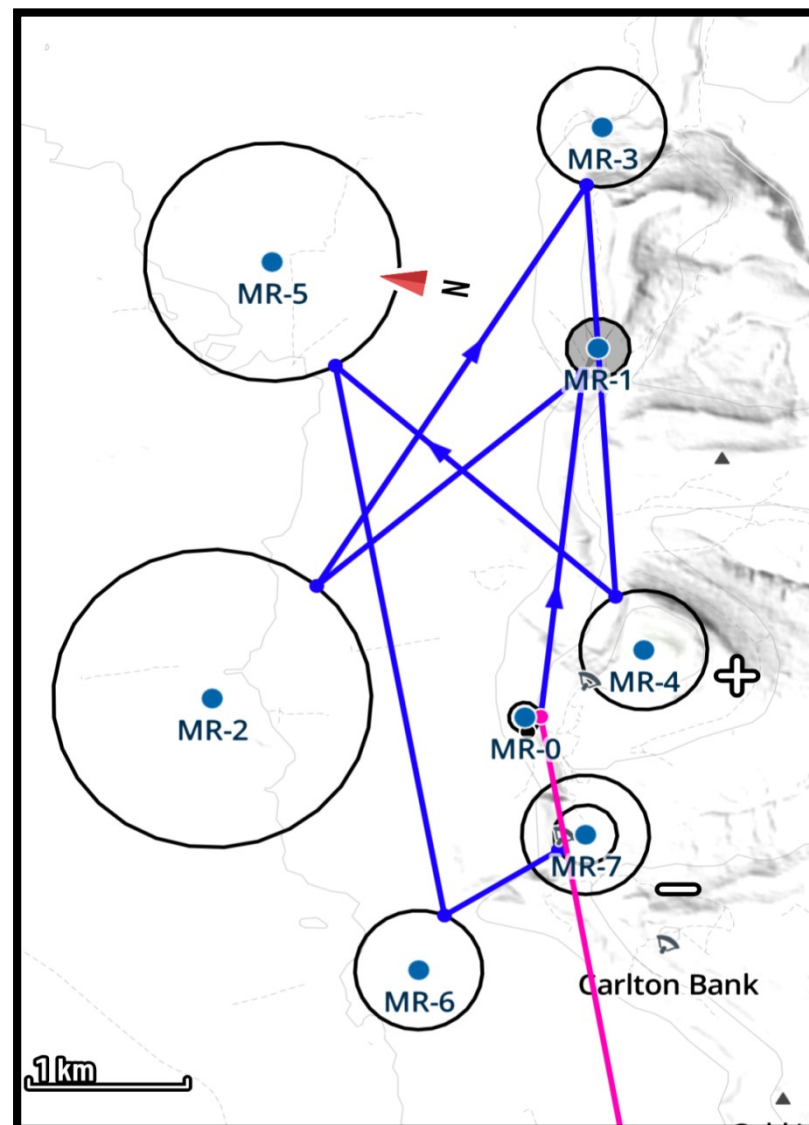
ID 1214 Windbank 31.9k, optimised 24.2k SSW – SW



ID 1210 Pendle 20.6k, optimised 15.1k NW - WNW

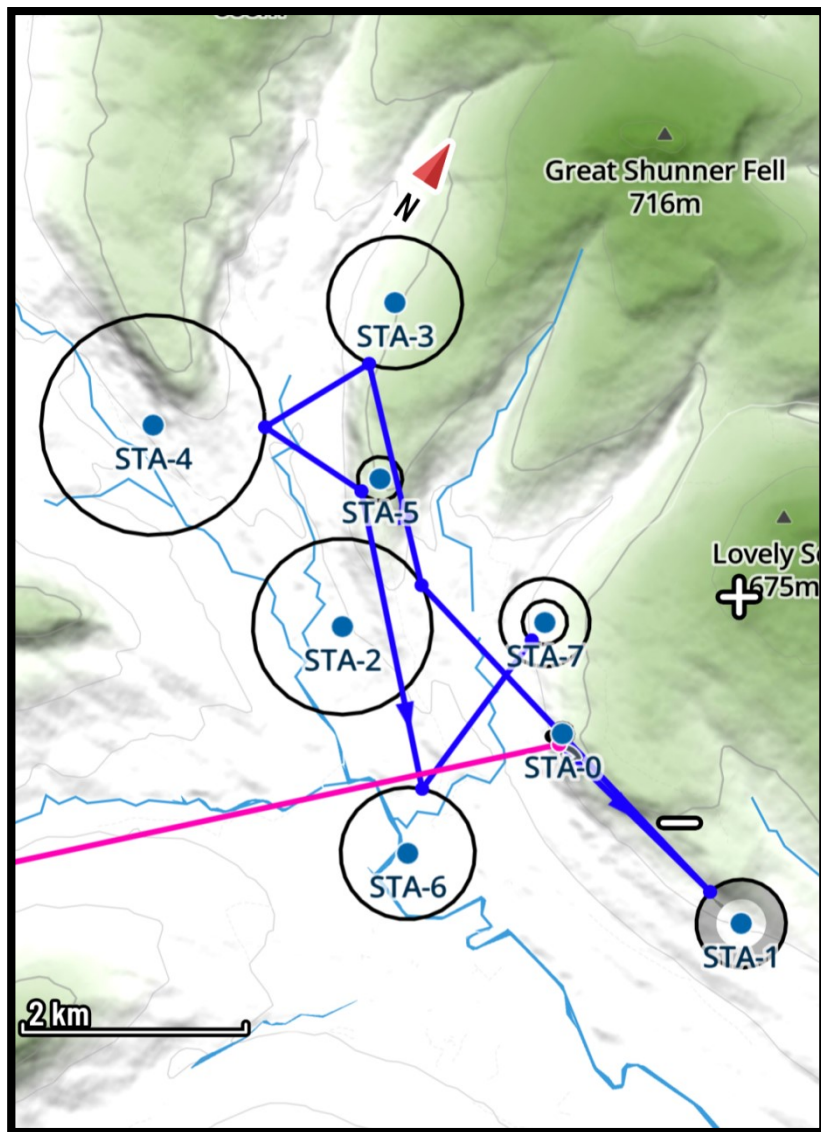


ID 1183 Parlick 20.4k, optimised 14.3k SSW to W

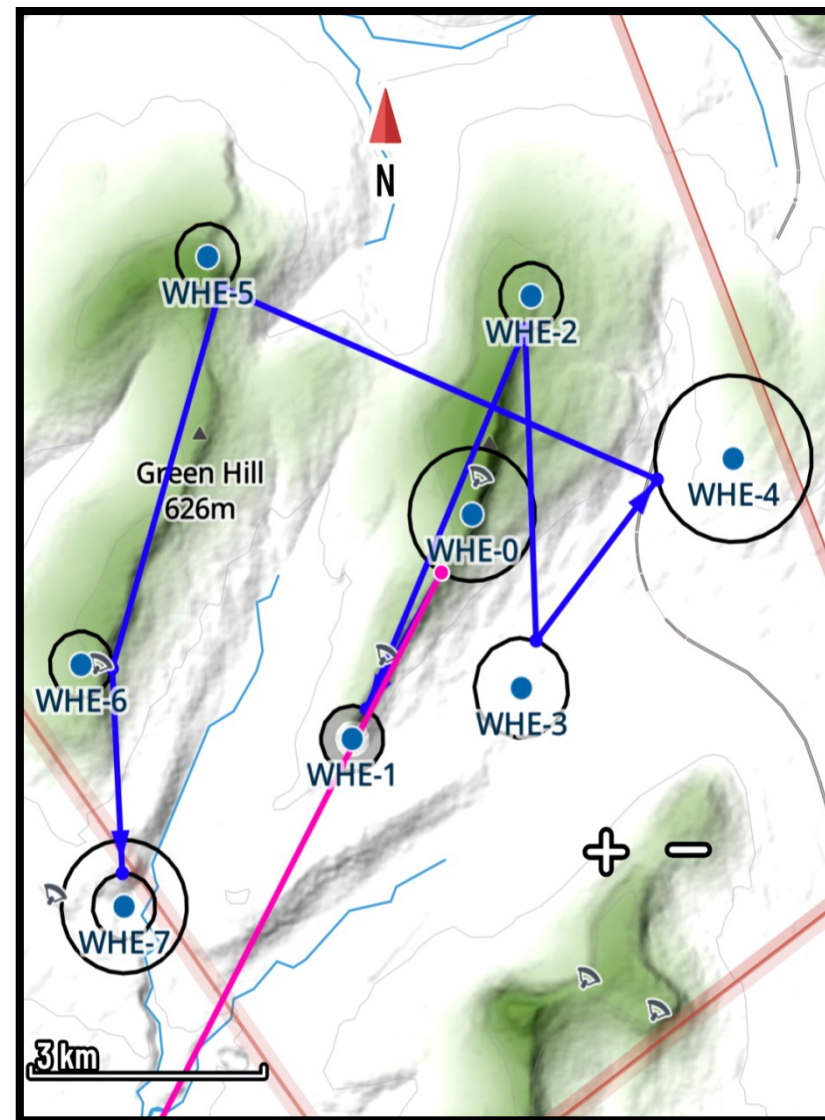


ID 1198 Model Ridge 23.7k, optimised 17.3k NNW – NNE

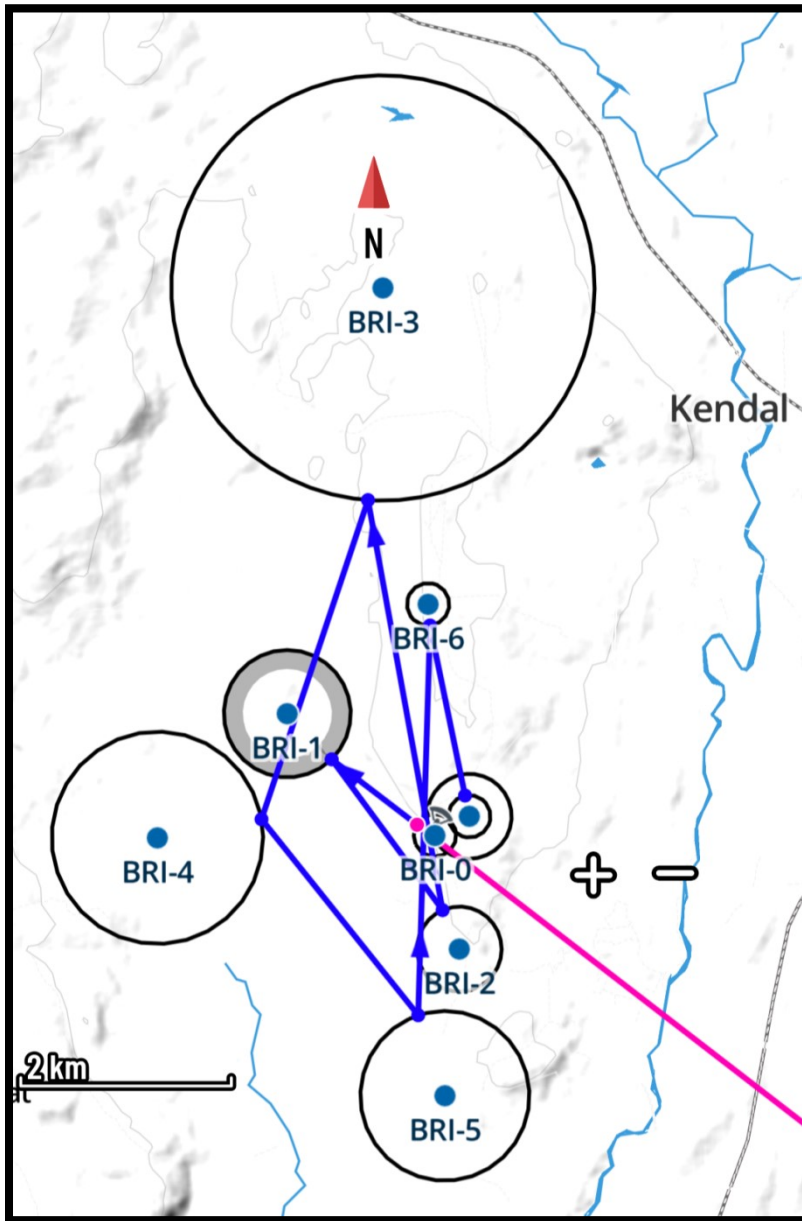




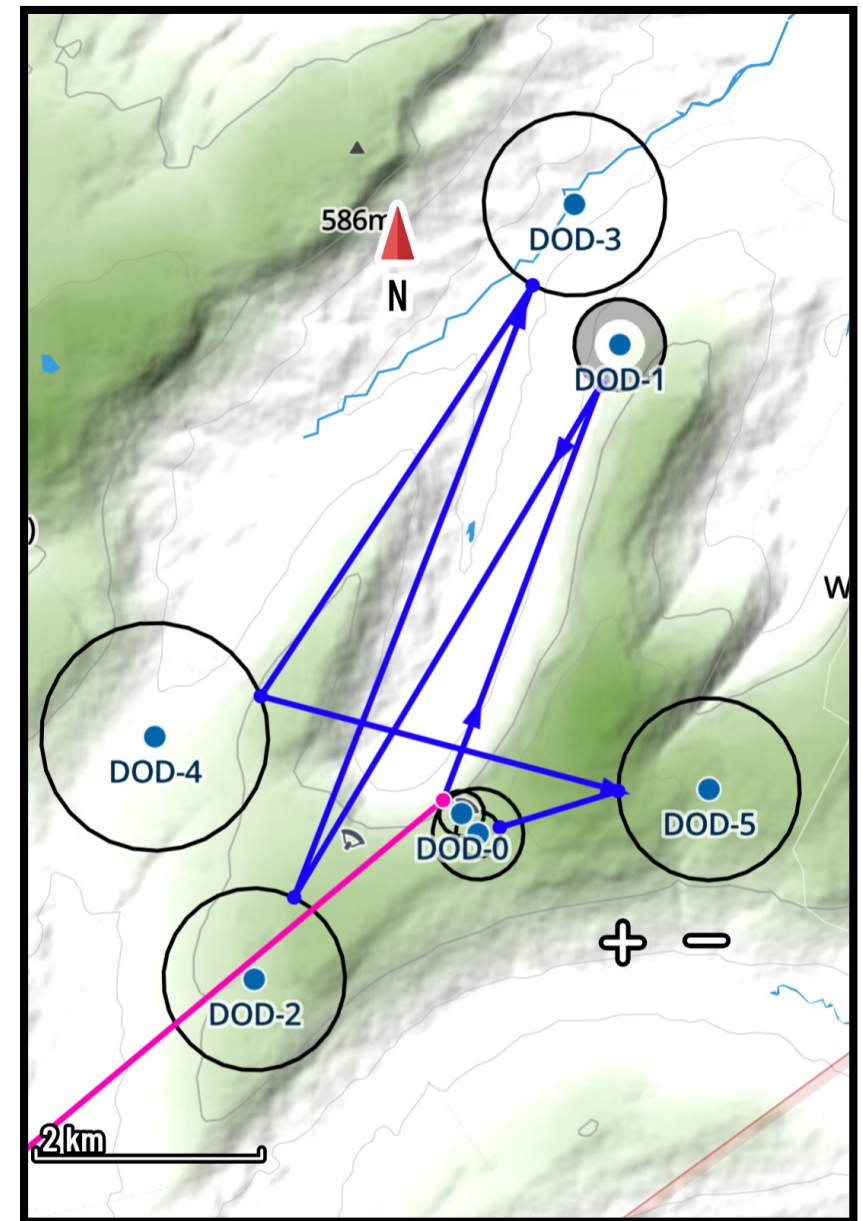
ID 1195 Stags 20.2k, optimised 14.3k SSE – SW



ID 992 Whernside 32.6k, optimised 26.3k E - SE

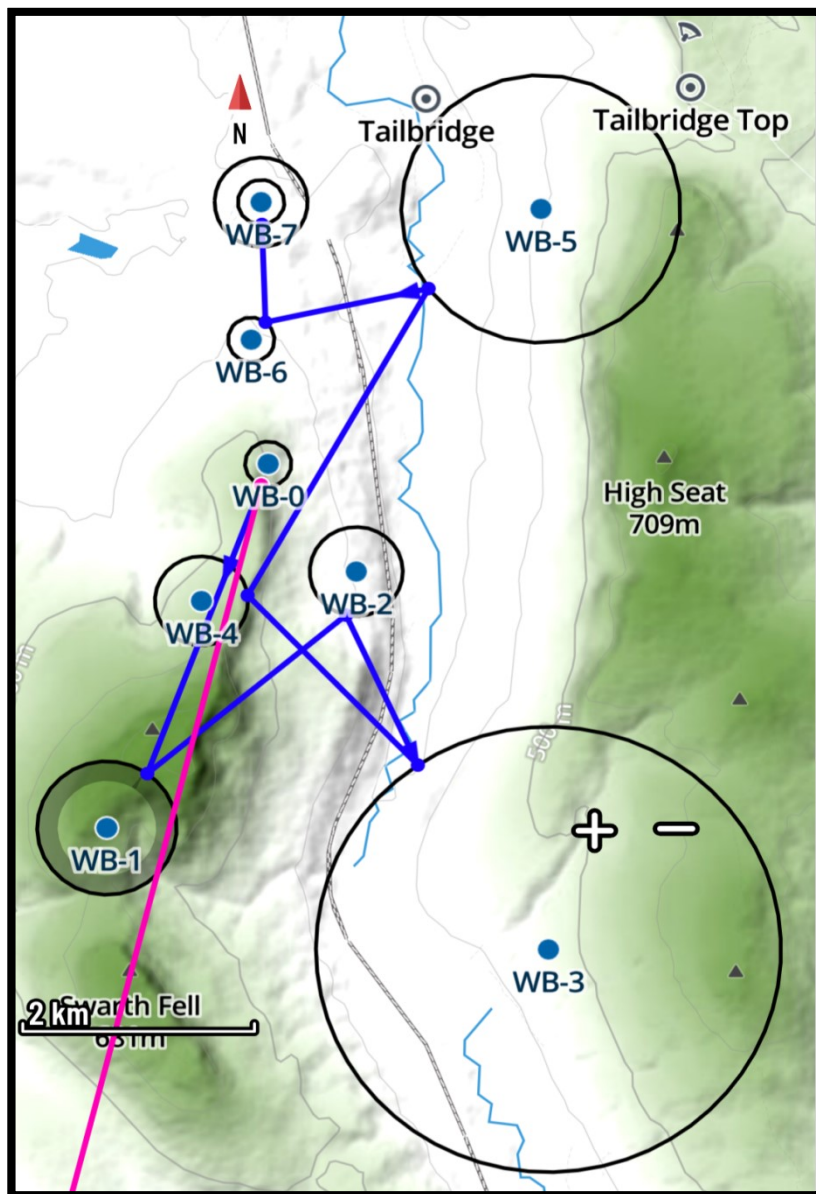


ID 1170 Brigsteer 26.7k, optimised 17.5k SW – W

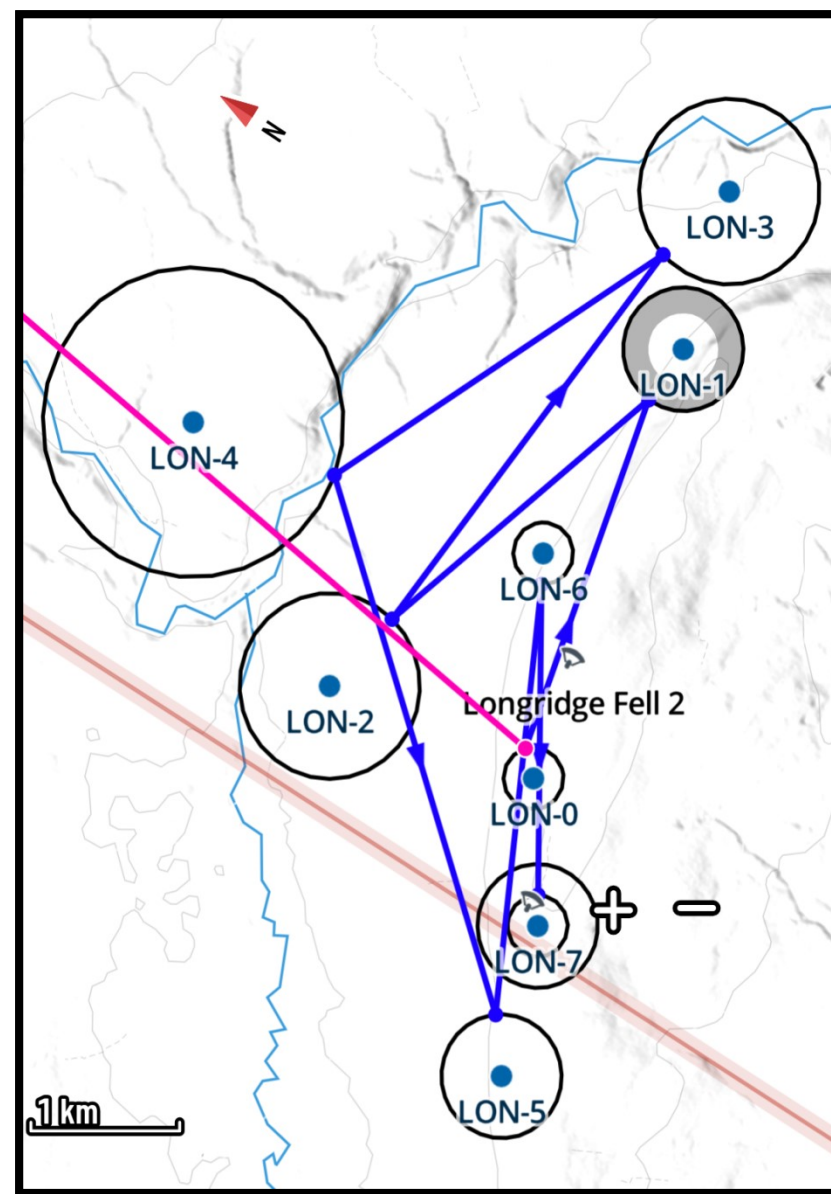


ID 1064 Dodd 31.1k, optimised 23.4k W - NW





ID 1207 Wild Boar 23.4k, optimised 14.3k ESE – ENE



ID 1215 Longridge 24.6k optimised 18.6k NNW - NNE

EWC 11/2024