

# CROSS COUNTRY FLYING FROM THE YORKSHIRE DALES

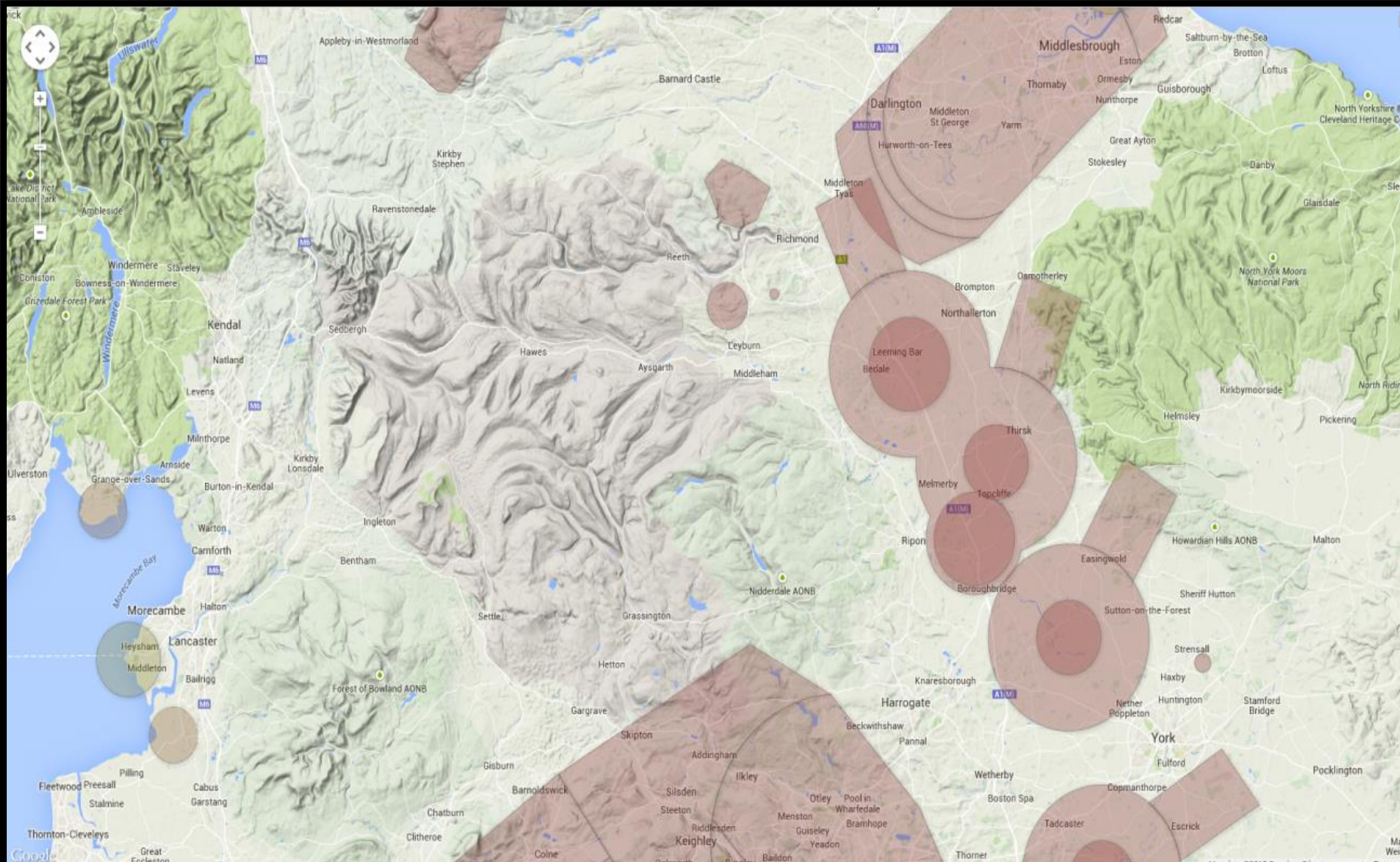
## **An XC friendly area**

---

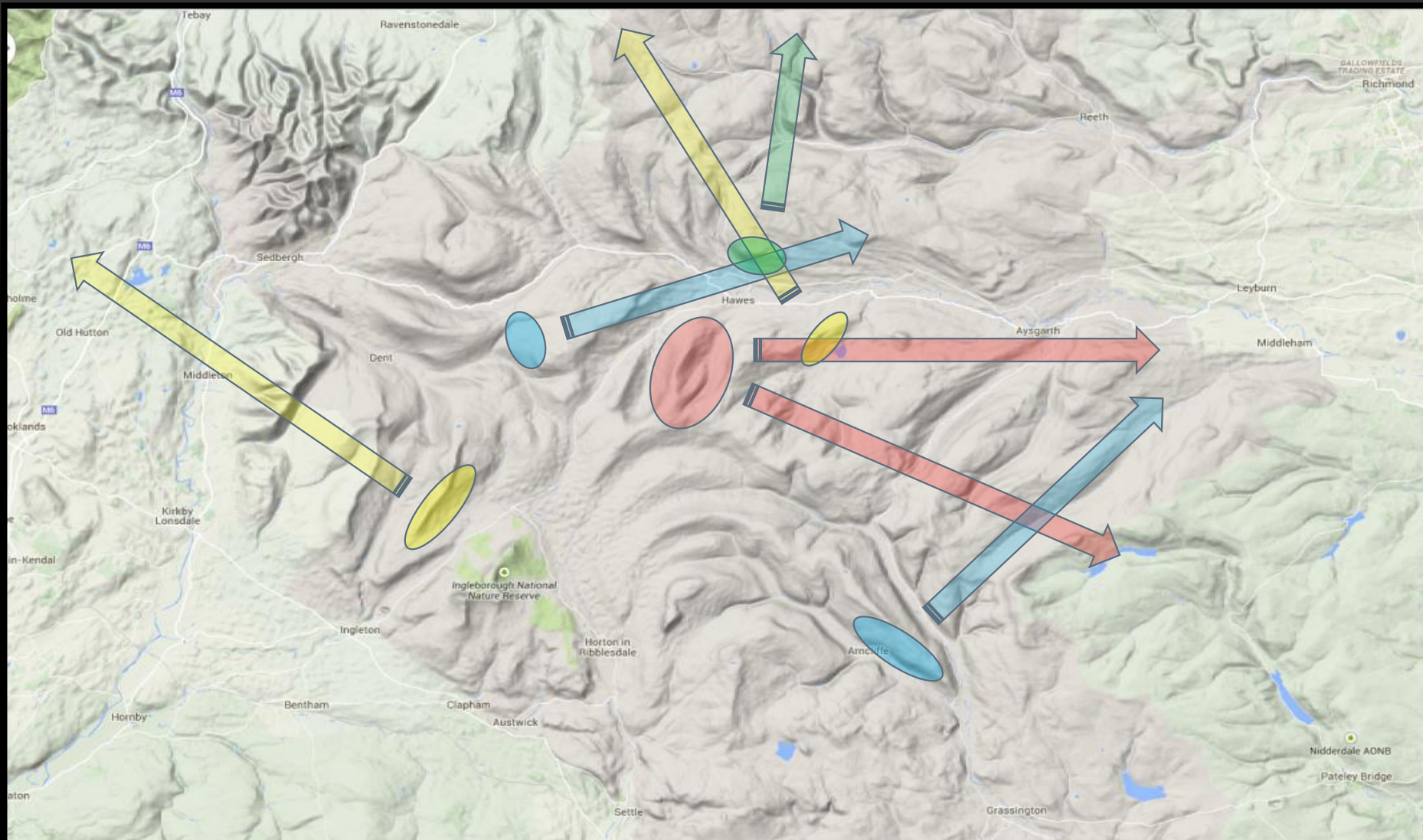
Safe Moorland and Flatland terrain

Opportunities and Restrictions

Good retrieve infrastructure



- Excellent in all directions except northerlies due to airspace - LBA and Manchester
- Need to thread your way through Vale of York many ATZ's but not too difficult
- You need to consider sea breeze if planning on going far
- Not many closed circuit flights done



Main sites and routes out of Dales – all have 100k + potential with a bit of planning.

## The pro's and con's of flying cross country from the Dales

- Well positioned for big (ish) flights in most directions
- Good, strong thermals, but base never that high
- Wave can effect some sites and lead to thermal disruption
- You need to plan for airspace beyond 35k
- A long flight will encounter sea breeze usually
- Convergence is a possibility
- Sites are popular on good xc days so you'll have company
- There are known 'sink holes' so avoid them.
- It's a good target from the Lakes and Parlick area
- But not easy to make the crossings
- A beautiful place to fly.



---

END OF MODULE