



- Pennine Soaring Club -

11th March

Ed Cleasby

- PROGRAMME -

- Introduction
- Defined Flying Challenges *in the Lakes, Dales and Pennines*
- An personal insight into flying the Lake District (FH)
- An personal insight into flying the Yorkshire Dales (GOC)

Questions are welcome at any point

www.xcflight.com



Flying Heaven v God's Own Country

(Yet another comparison site)

- Topography
 - physical character of the area
- Meteorology
 - weather influences and patterns
- Flying the area
 - lesser known areas/sites/routes



An personal insight
into flying the Lake
District and the
Yorkshire Dales

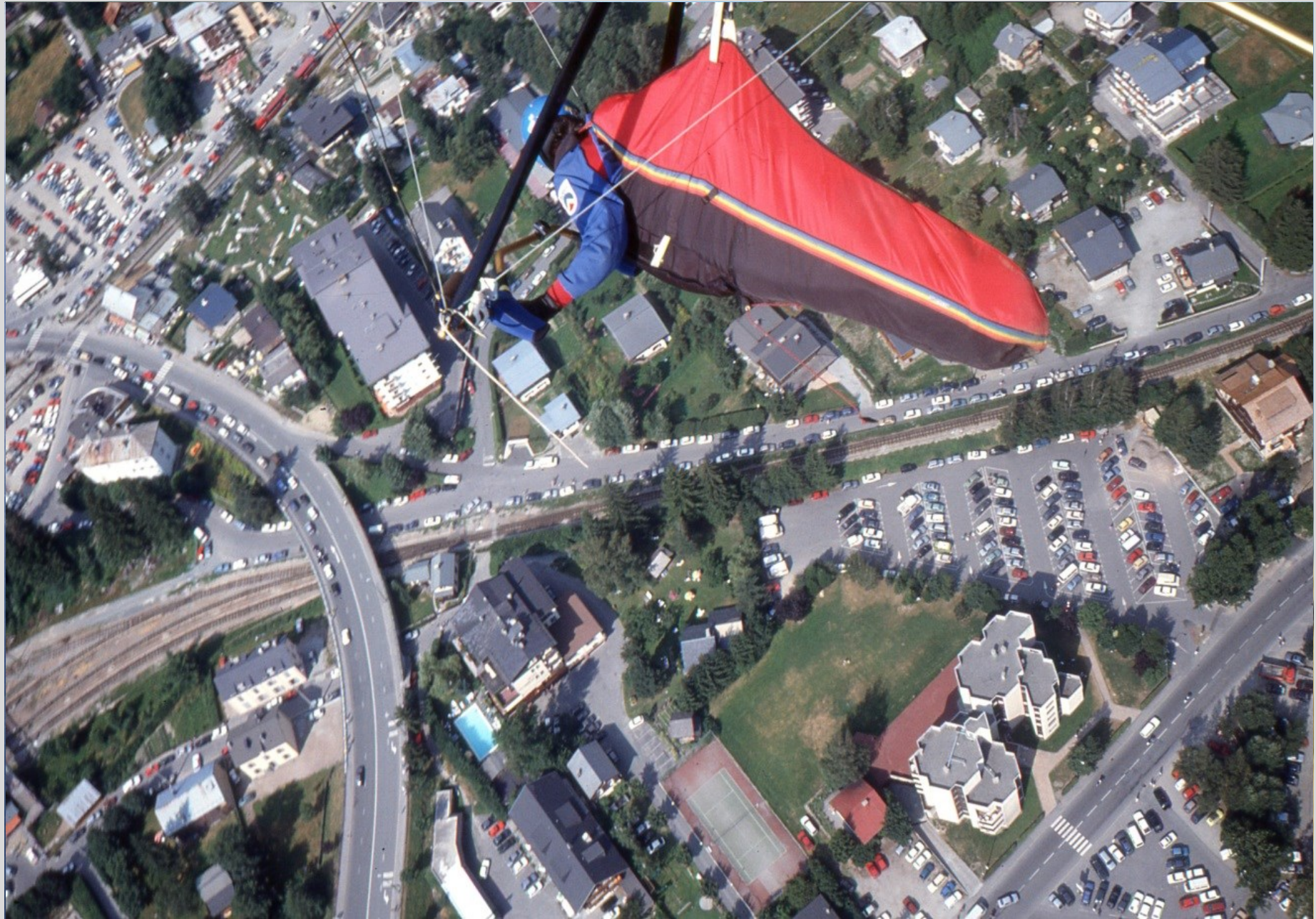


Introduction – background '72 – '91 (Climbing)



Chamonix – summer '73

Introduction – background '79 – '97 (hang gliding)



Introduction – background '97 – '05 (power hg)



Introduction – background '92 – '06/'13 (paragliding)



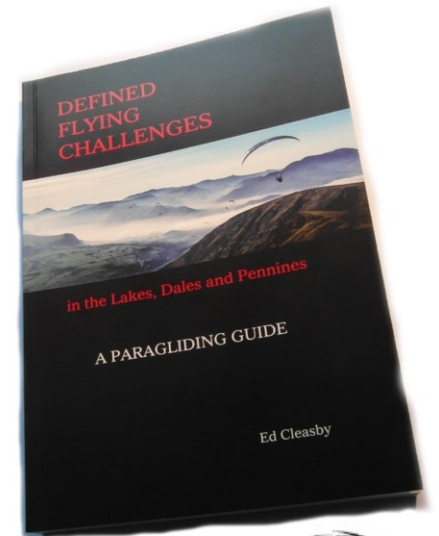
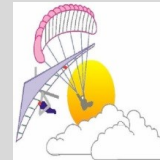
Defined Flying Challenges

In the Lakes, Dales and Pennines



- The concept/beginnings

- i) Graded challenges
- ii) GPS practice
- iii) Individual route planning
- iv) Area introductions
- v) Expert commentary
- vi) Top six?



www.xcflight.com



DFC - Illustrative pages/sections

INTRODUCTORY NOTES

ROUTE GRADING SYSTEM

The route grading uses a familiar colour code system with a brief description of each grade provided below. They are graded for reasonable conditions, neither excellent nor terrible. Please note that the route is graded for reasonable conditions, neither excellent nor terrible.

Please note that the route is graded for reasonable conditions, neither excellent nor terrible.

INTRODUCTORY NOTES

NOTES ON MAPPING INFORMATION

All routes are graded for reasonable conditions, neither excellent nor terrible. Please note that the route is graded for reasonable conditions, neither excellent nor terrible.

Main map



Basic terrain

Take off

With

Turnpoint

10001 5

10002 5

10003 5

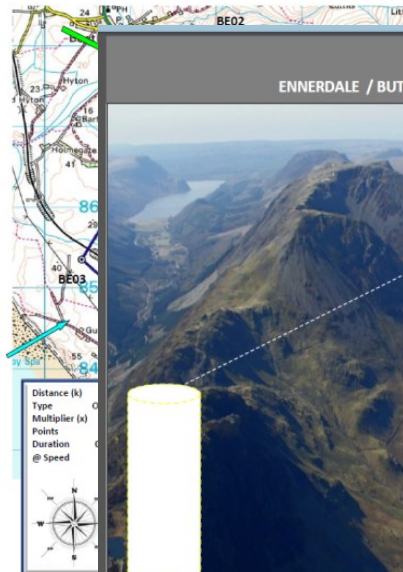
10004 5

WETHER FELL

Site: Wether Fell
Club: Dales Hang Gliding & Paragliding Club
Take off: 54.16.073N/2.12.349W approx - 1841'
Route name: Leyburn or Bust! / Summerbridge
Route type: Flight to goal
Cylinders: 400m radius (3.5m/s)
Difficulty level: 1



BLACKCOMBE - West Cumbrian Way



ENNERDALE / BUTTERMERE



Photo: Dave Ashcroft Collection

Looking back down the line of the Wainwright Memorial route, with the dog-leg forward to Mellbreak clearly indicated. The TP cylinder is centred on Innominat Tarn, Haystacks. Crummock Water and Buttermere nestle to the right with the Lakes Charity Classic just out of photo on the right of the first lake. The quiet, remote Ennerdale cleaves in on the left.

A flavour of the Langdales

Mike Endacott provides an insight into the thinking behind Lakes triangles – and the some of the pitfalls.

With only one visit to the Lakes this year, it was great to find a corker forecast with the Langdales written all over it.

After the usual wait approaching top cover, a tasty ride out. I was a bit late and came good and a new and while some pushed the triangle, my own mind Catbells.

Following the high ground now around 4300' and



On leaving base an eagle was looking to push round

A doosie climb off the moor, losing no height on the Moor.

Six of the best ?



FLIGHT 3
FAI Triangle

Flight details

Date: 22/8/2013
Take off: Pendle
Total dist: 69k
Time: 3:55hr
Av speed: 11.5kph
Max height: 9000'
Best climb: 4.2m/s

Mark Wilson

Nivivuk Icepeak 5

One of several similar flights (and the odd reserve ride) that day by a strong Pennine team - this flight being the best. Limited by airspace behind the hill, the flight explored a large area to the east and north and extended the known triangle potential of Pendle.

"..... Mark is a key member of a very strong team of Pennine pilots - possibly the best team around. Willing to drive long distances at the hint of a decent RASP forecast. Apparently, Mark taught the others all he knows"



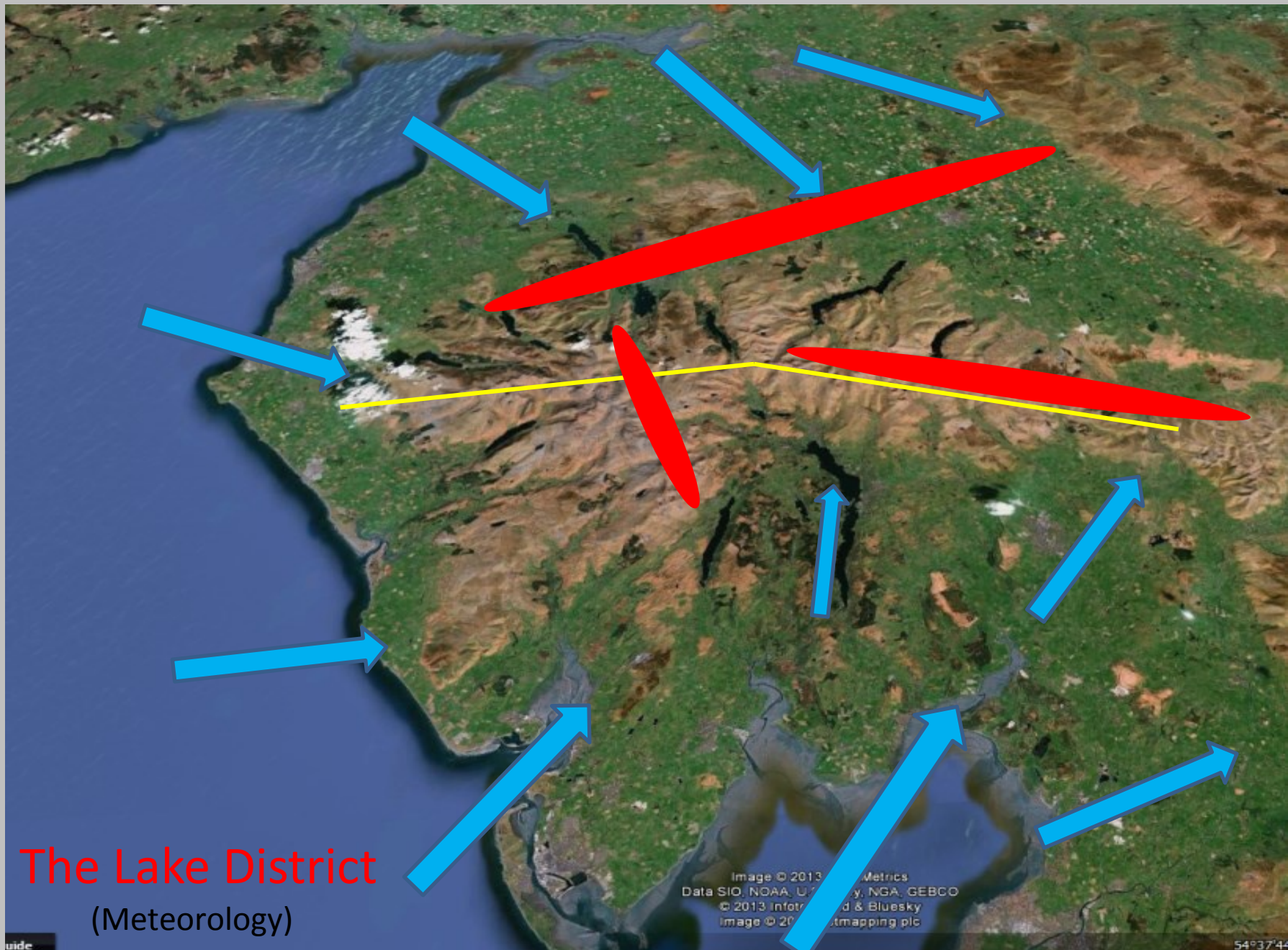
An personal insight into flying the Lake District



- Topography
- Flying conditions
- Some typical routes

Most of Cumbria from 248 miles – 4/3/2013 (*Cumbrian pilot makes extravagant claims*)

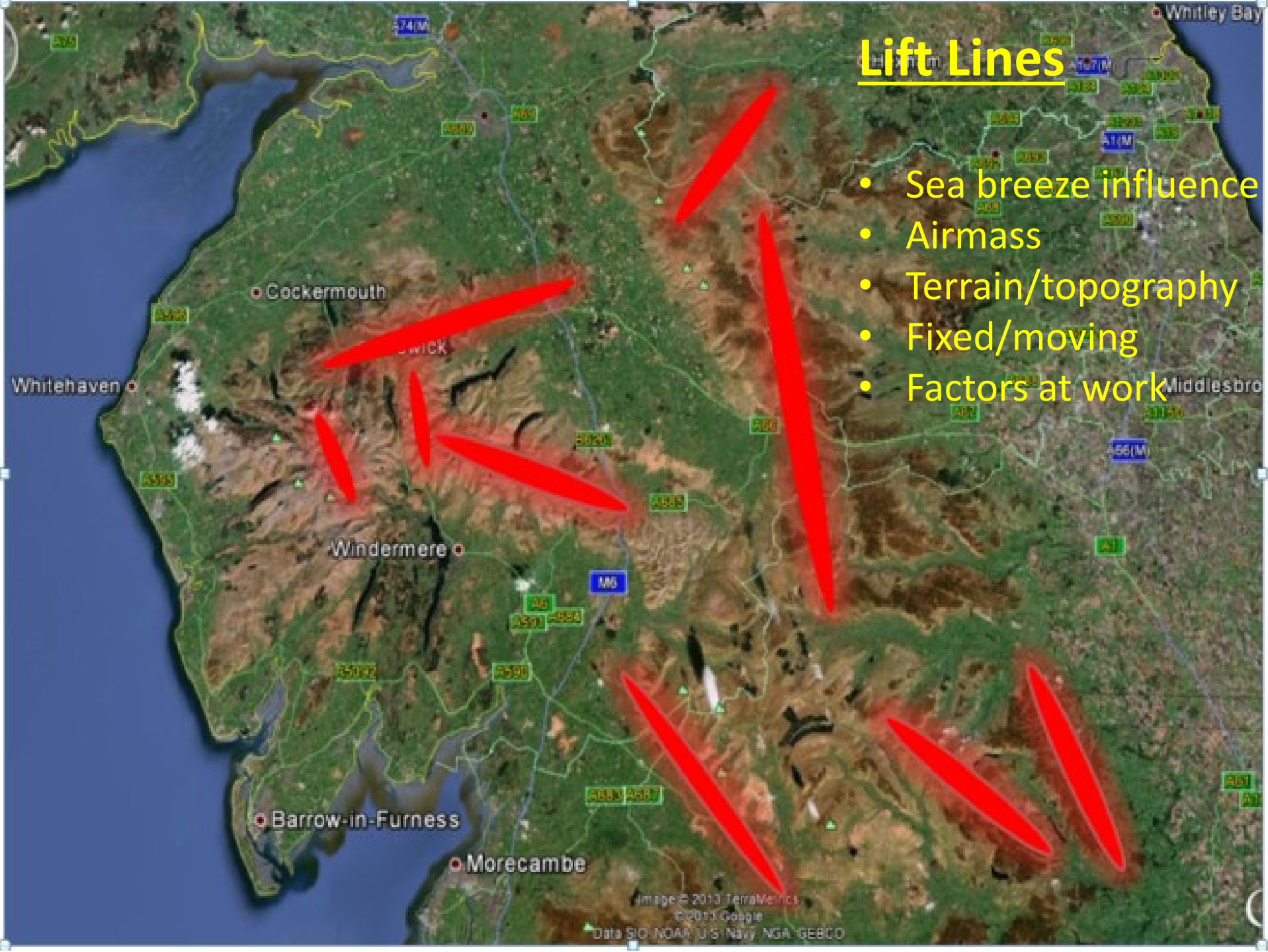




The Lake District (Meteorology)

Lift Lines

- Sea breeze influence
- Airmass
- Terrain/topography
- Fixed/moving
- Factors at work



Areas to avoid

- Over simplistic
- reasoning



The Lake District

(Flying)

- Link the ridge lines
- Link the convergence lines
- Link the known hotspots

LCC – 2011: Declared O & R record



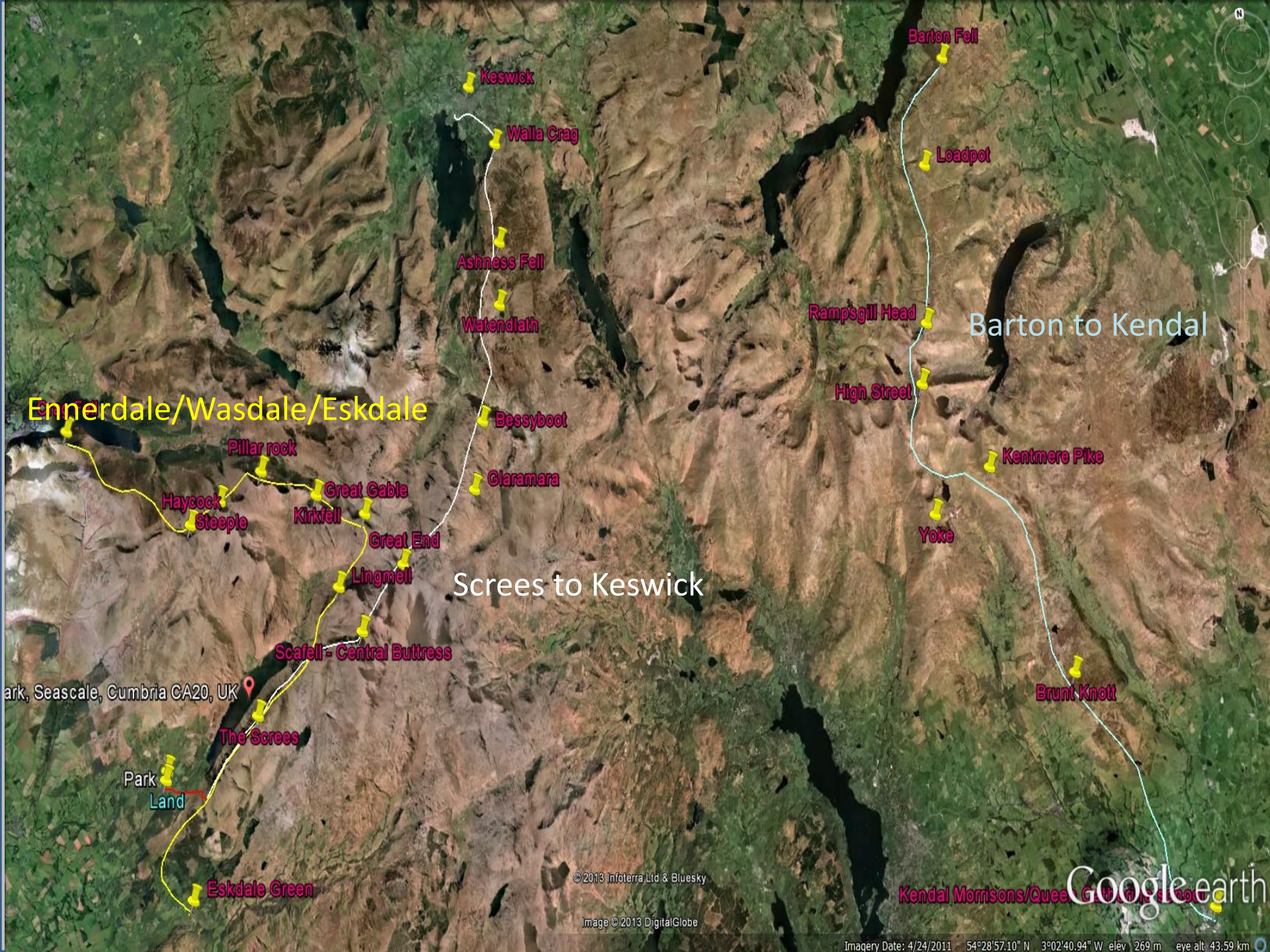
Flying the route – photo set



The Lake District – A selection of three mountain routes



- Ennerdale/Wasdale/Eskdale
- Screes to Keswick
- Barton/High Street/Kendal



Ennerdale/Wasdale/Eskdale

Barton to Kendal

Screes to Keswick

Park, Seascale, Cumbria CA20, UK

© 2013 Infoterra Ltd & Bluesky

Image © 2013 DigitalGlobe

Kendal Morrisons/Queen's Gate School

Google earth

Imagery Date: 4/24/2011 54°28'57.10" N 3°02'40.94" W elev 269 m eye alt 43.59 km

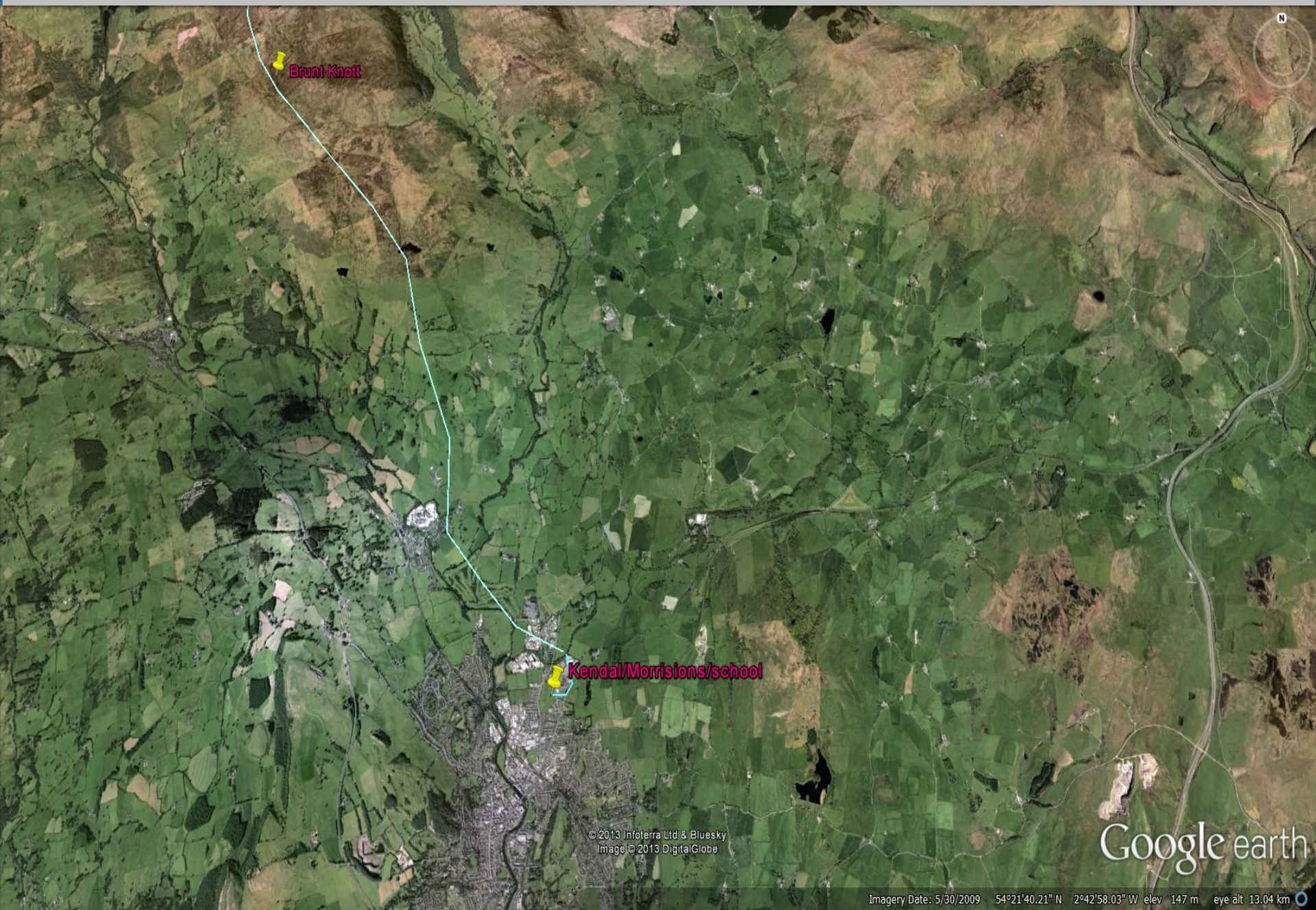
Ennerdale/Wasdale/Eskdale ----- route



Route end (Keswick)



Barton Fell/High Street/Kendal ----- route



© 2013 Infoterra Ltd & Bluesky
Image © 2013 DigitalGlobe

Google earth

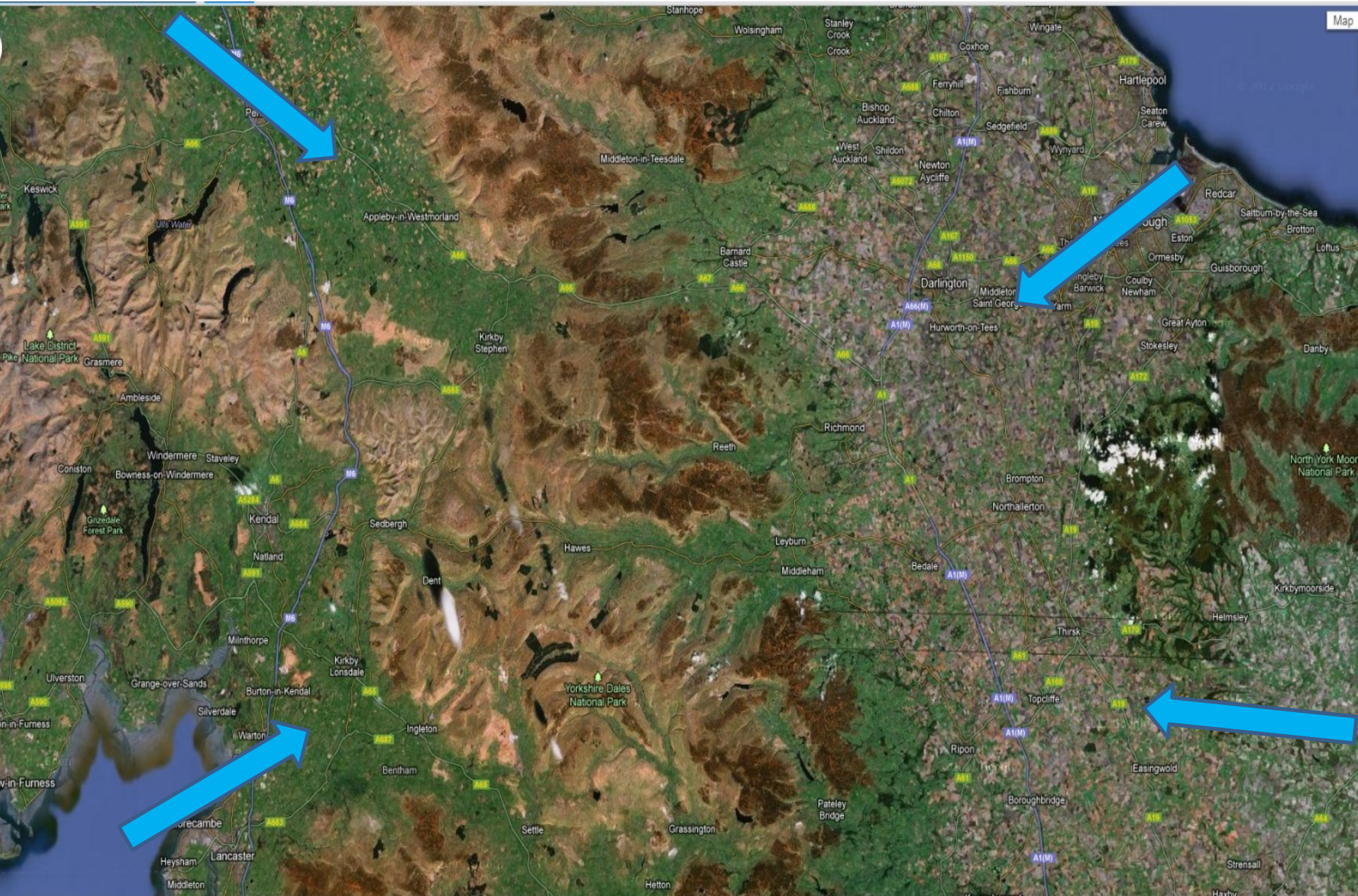
Imagery Date: 5/30/2009 54°21'40.21" N 2°42'58.03" W elev 147 m eye alt 13.04 km

An personal insight into flying the Yorkshire Dales

- Topography
- Flying conditions
- Some typical routes

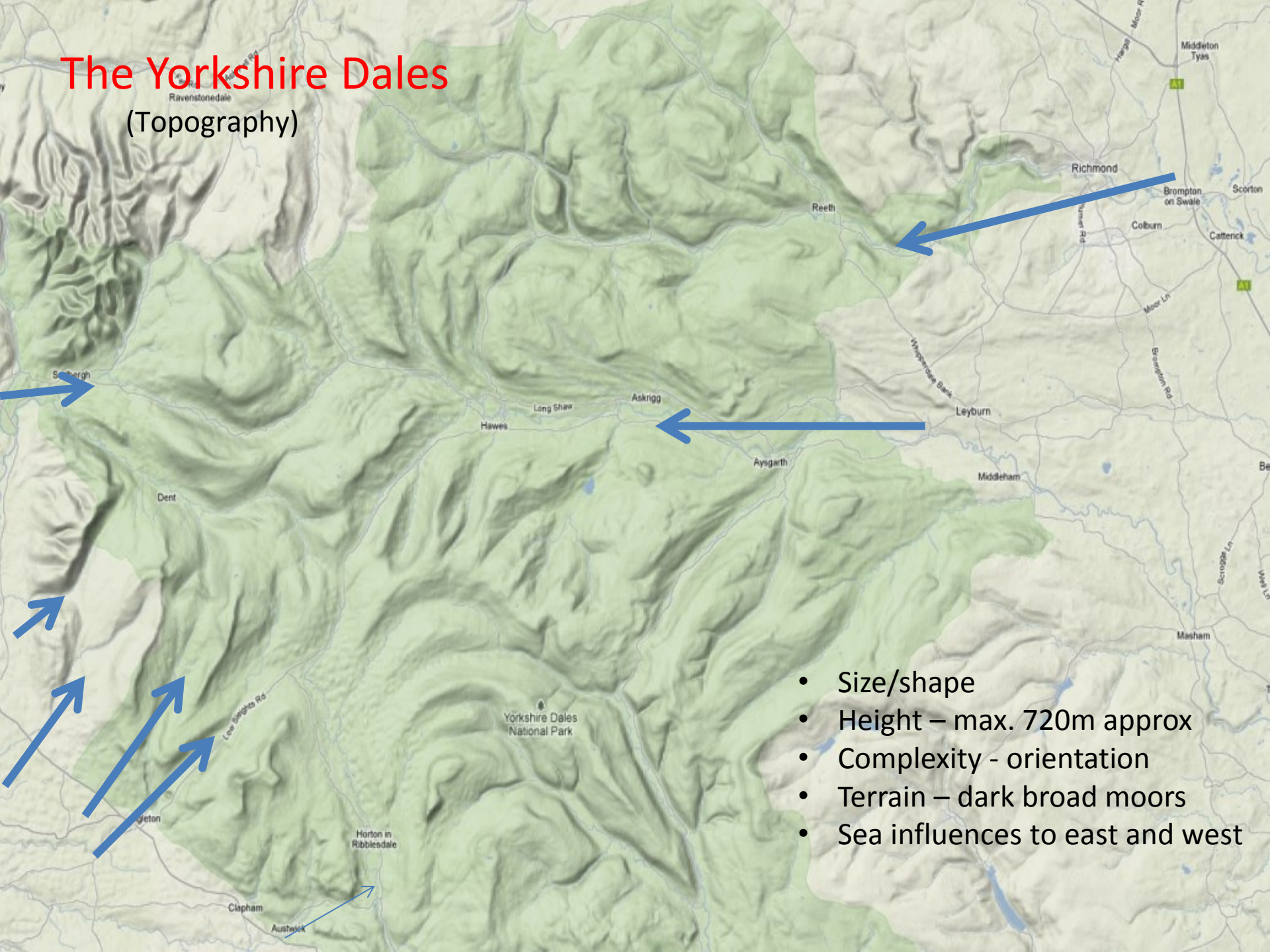


Yorkshire Dales - general



The Yorkshire Dales

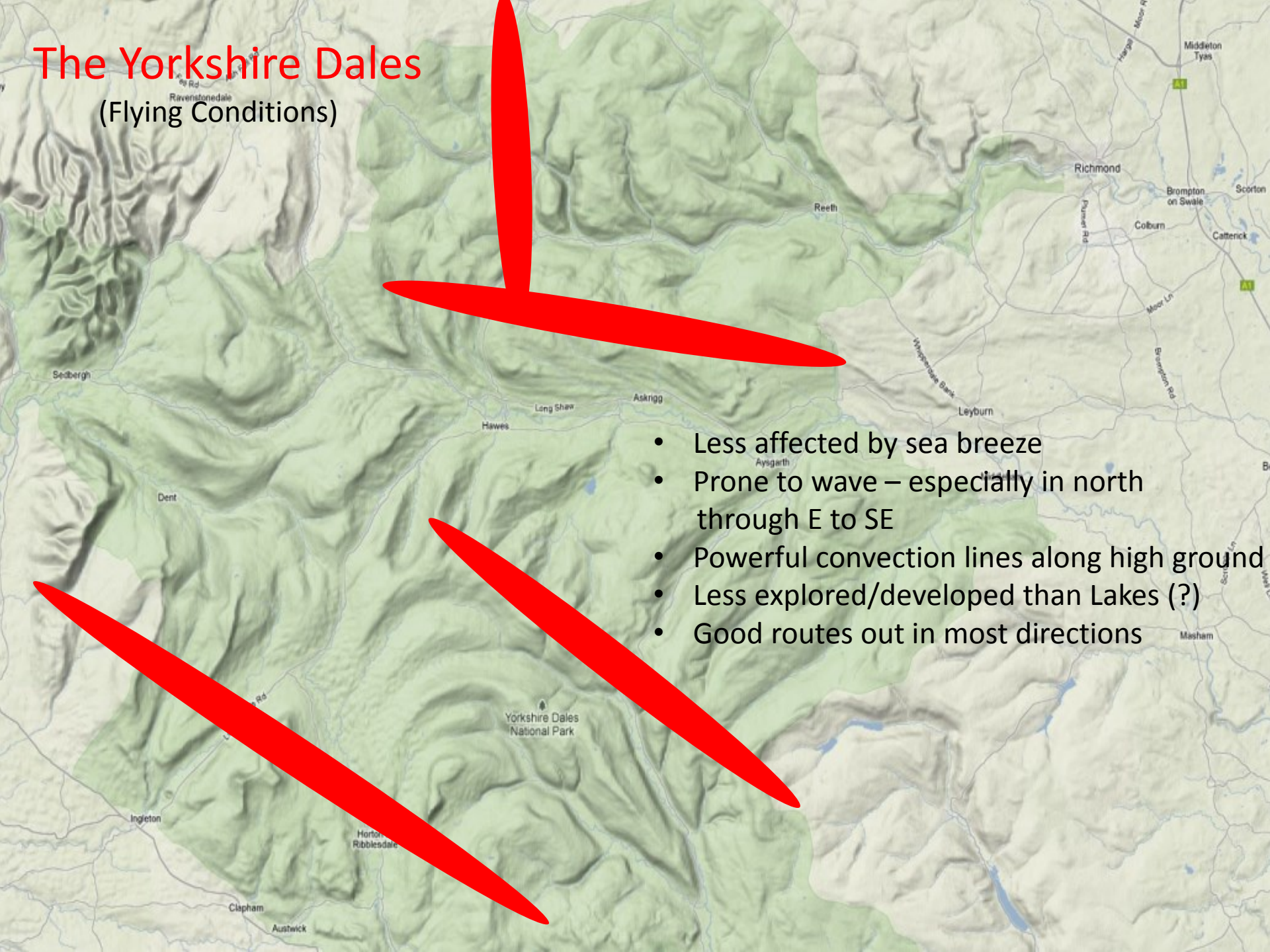
(Topography)



- Size/shape
- Height – max. 720m approx
- Complexity - orientation
- Terrain – dark broad moors
- Sea influences to east and west

The Yorkshire Dales

(Flying Conditions)

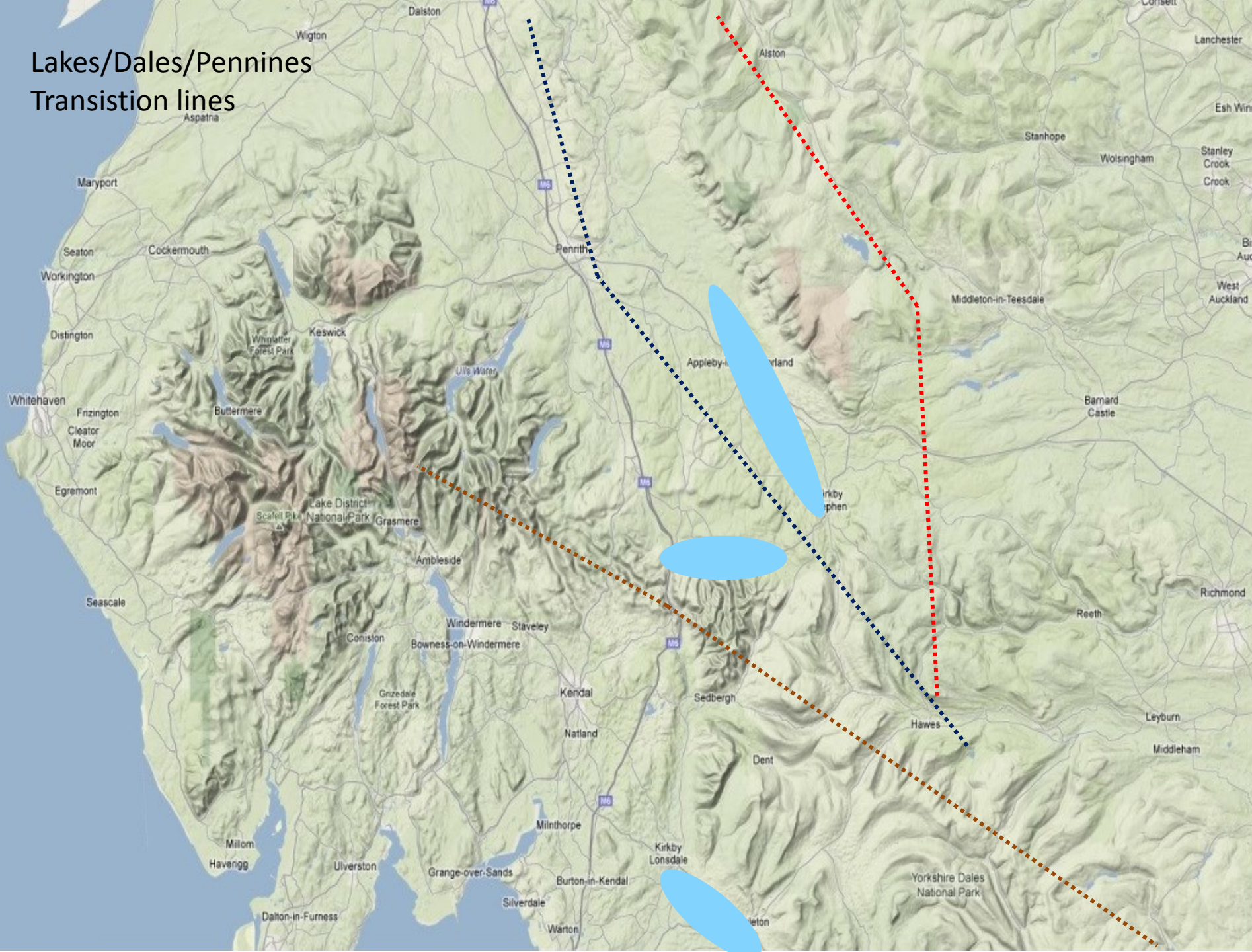
- 
- A topographic map of the Yorkshire Dales region, showing the Yorkshire Dales National Park and surrounding areas. The map is overlaid with three large red arrows indicating wind directions: one pointing north-northwest, one pointing east-southeast, and one pointing south-southwest. The map includes labels for various towns and villages such as Sedburgh, Dent, Hawes, Long Shaw, Askrigg, Leyburn, Richmond, Brompton on Swale, Colburn, Catterick, Masham, Clapham, and Austwick. It also shows major roads like the A1 and A66, and rivers like the Ure and Wharfe.
- Less affected by sea breeze
 - Prone to wave – especially in north through E to SE
 - Powerful convection lines along high ground
 - Less explored/developed than Lakes (?)
 - Good routes out in most directions

Powerful lift

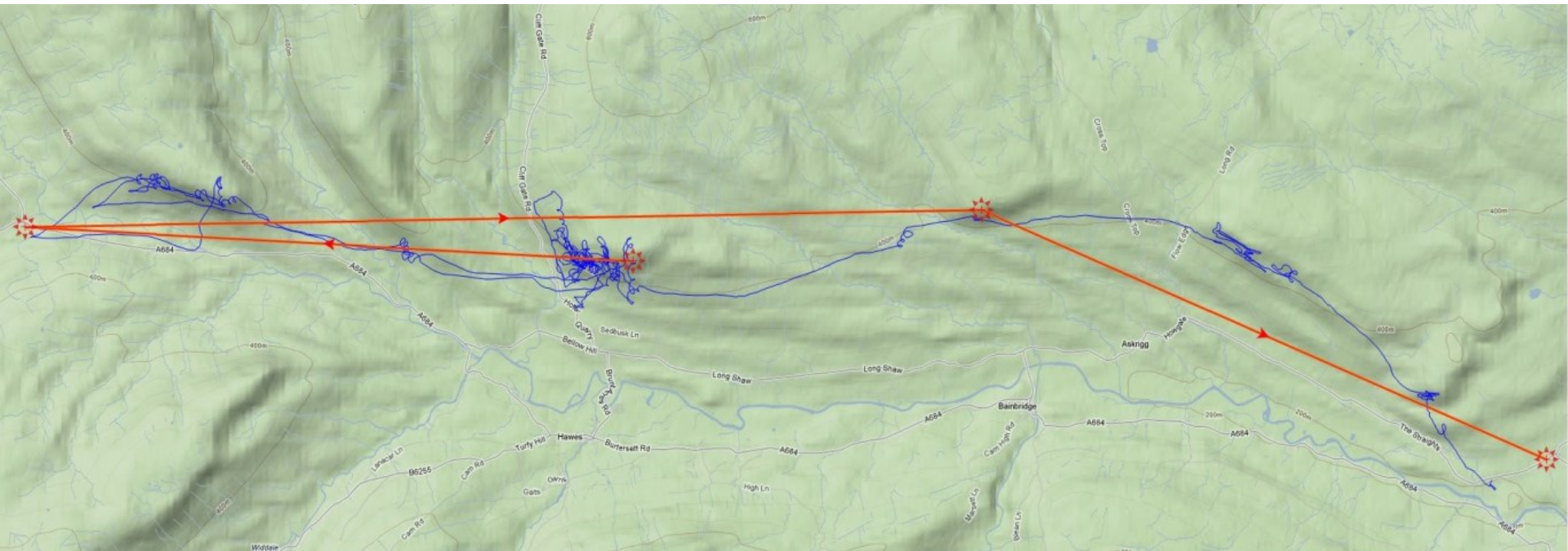
Powerful lift



Lakes/Dales/Pennines Transition lines



Stags / Moorcock / Caperby - 30k with 2tp

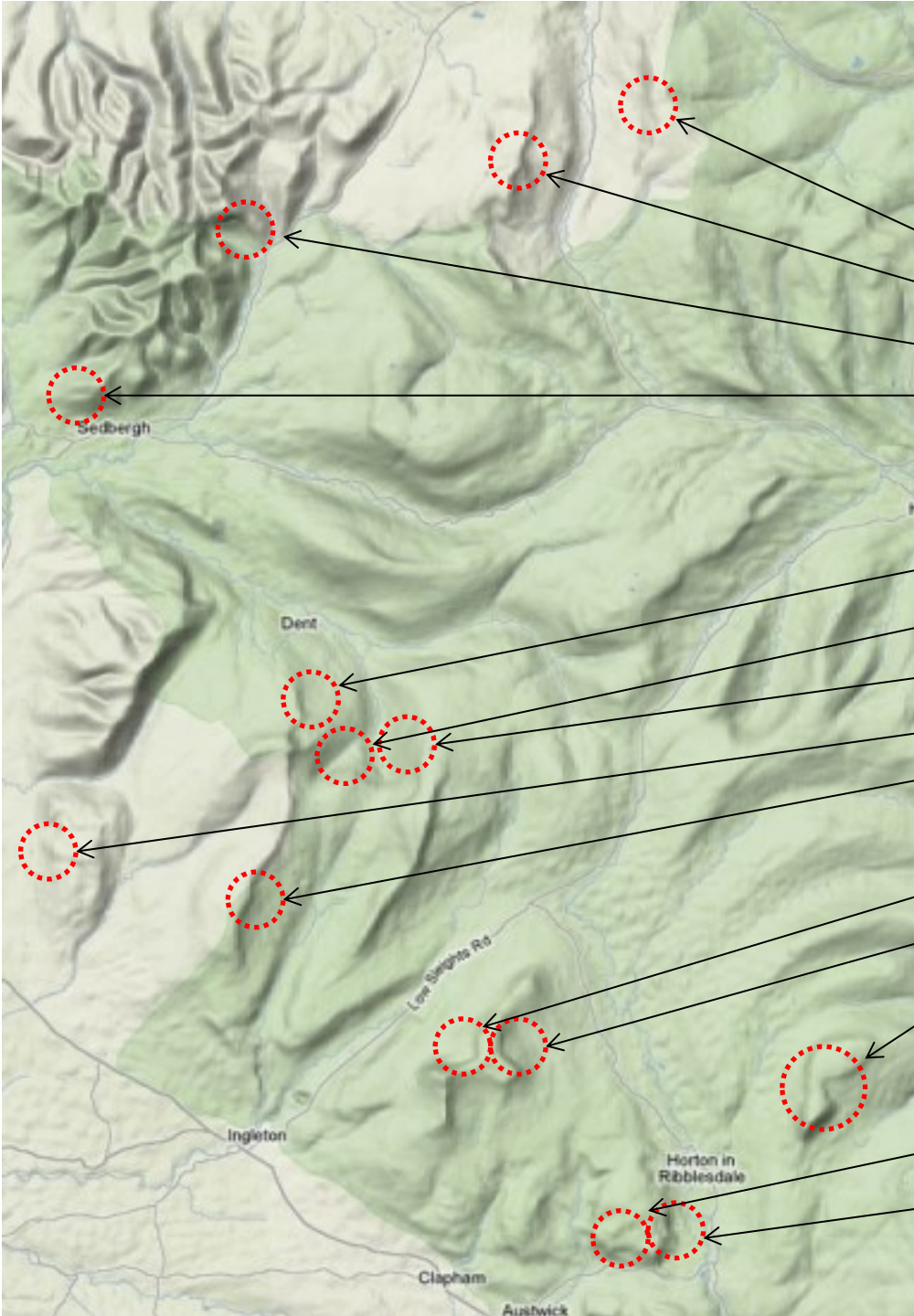


- One of the first routes I put together for DFC
- Very average day with lowish base and 7/8 cover
- Started as O&R until offered lift back – went for Leyburn
- Wanted to fly Cotteside – denied permission
- Others asked for route details – then other routes
- Good to try things – however small.

Site Developments in the Dales (Top Secret!)



Undocumented sites between
the CSC and DHPC areas.



Mallerstang

Wild Boar

Cautley

Winder

Great Combe

Deepdale

Whernside (west)

Barbon (Johnny Barnes)

Gragareth

Ingleborough (west bowl)

Ingleborough (Simon/Park Fell)

Pen y ghent (west and east faces)

Wharfe

Helwith Quarry

*That's All
Folks!*



Questions?

www.xcflight.com